

# *Lockformer*

711 Ogden Ave. Lisle, IL, 60532, USA  
tel# 1-630-964-8000, [WWW.LOCKFORMER.COM](http://WWW.LOCKFORMER.COM)

## **EASY EDGER**

Manual



Ver. 11-03-05

**FORMTEK**

# Lockformer

711 Ogden Ave. Lisle, IL, 60532, USA  
tel# 1-630-964-8000, [WWW.LOCKFORMER.COM](http://WWW.LOCKFORMER.COM)

## SAFETY FIRST

Common sense and extreme care must be used at all times during the operation and maintenance of this equipment. It is important that ALL personnel who will operate, maintain, or supervise the use of this equipment, read and understand the sections of this manual concerning SAFETY and the OPERATION of the equipment.

The equipment described in this manual was designed and manufactured for a specific function. It should not be used for any other purpose or outside of the design specifications as this may result in damage to the equipment and/or injury to the operator. Modifications or additions to this equipment should not be made. Any such modifications or additions will void the warranty and may subject the operator to injury.

In general, every piece of equipment must be treated with extreme care. While operating or maintaining this equipment, each individual must be aware of their own safety as well as the safety of all bystanders.

## WARNING!

Do not wear loose clothing, neckties, improper gloves, or jewelry while operating this machine. If long sleeves must be worn, avoid loose cuffs or buttons, Tie back or contain long hair.

Wear proper gloves to prevent lacerations caused by sharp edges of stock as it travels through the forming operation.

Be alert for loose, worn, or broken parts. Never operate this equipment unless it is in good working condition.

As the stock enters the guides and feeds into the rolls, a pinch point is created as the stock advances. Keep hands clear of area and all pinch points.

Remember that the information contained in this manual is only a portion of an adequate training program. It must be coupled with specific instructions for your application along with full information of national and local safety regulations that may apply.

## WARRANTY

Our warranty on the products we manufacture is limited to repair or replacement without charge, of any part found to be defective in materials or workmanship. This warranty is for a period of one year (unless otherwise specified) from the date of shipment from our factory, for all mechanical features of the machine except purchased components that carry the warranty of the original manufacturer.

This warranty is conditioned on proper installation, maintenance and use of the equipment. The warranty will be void if the equipment is subjected to misuse or abused or if used beyond the standards in this manual, including material dimensions and gauge.

Warranty parts and components will be shipped freight collect from FORMTEK. If the defective part has not been returned to FORMTEK within 15 working days after receiving the replacement part, your company will be responsible for the cost of replacement.

The warranty provided in this clause is in lieu of all other warranties, express or implied, arising by law or otherwise, including the implied warranties of merchantability and fitness for a particular purpose which are hereby disclaimed by FORMTEK MACHINERY and excluded from this agreement. This warranty shall not be modified for any reason. In no event shall FORMTEK MACHINERY be liable for consequential or incidental damages, including the cost of assembly or disassembly, lost production or personal injury.

Replacement and maintenance parts must be purchased from FORMTEK or the component original equipment manufacturer. Use of other parts may result in unsafe operation or failure of the machinery. If there is a question to the suitability of a part proper personnel, FORMTEK should be consulted.

The information in this document has been reviewed and is believed to be complete and accurate. No responsibility is assumed for minor inaccuracies or content not addressed in this manual. Furthermore, FORMTEK reserves the right to make changes to any products herein, at any time, to improve reliability, function, or design. FORMTEK does not assume any liabilities arising out of any use of any product described herein, Nor does it convey any license under its trade secrets or patent rights nor the rights of others.

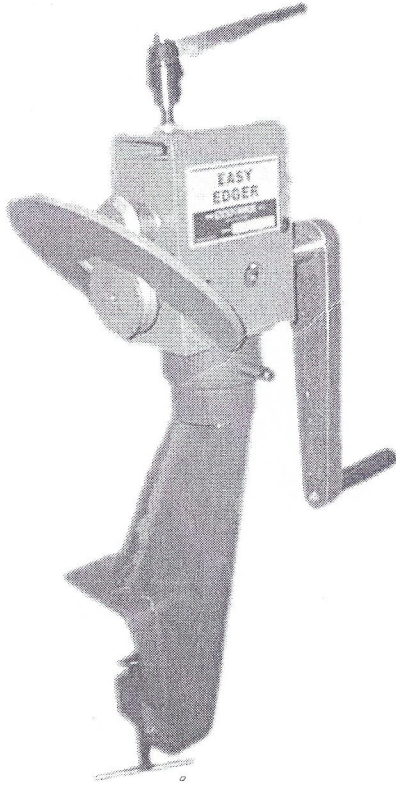
Ver. 11-03-05

**FORMTEK**

# Lockformer

711 Ogden Ave. Lisle, IL, 60532, USA  
tel# 1-630-964-8000, [WWW.LOCKFORMER.COM](http://WWW.LOCKFORMER.COM)

## Instructions



### OVERVIEW

The Easy Edger is used to form the curved and radius 90° Male flange seam edges of sheet metal. The handle at the top of the unit is used to set the depth of the forming roll. Rotating the large handle to the side turns the forming rolls.

### MOUNTING UNIT

Safe operation of the Easy Edger requires that it be clamped to a sturdy bench top. The bottom clamping device is designed for this purpose. Before operating the Easy Edger it is the responsibility of the operator to make sure that the bench mounting is sturdy, that the clamp is in good working order, and that the clamp is tight and secure to the mounting surface.

### CAPACITY

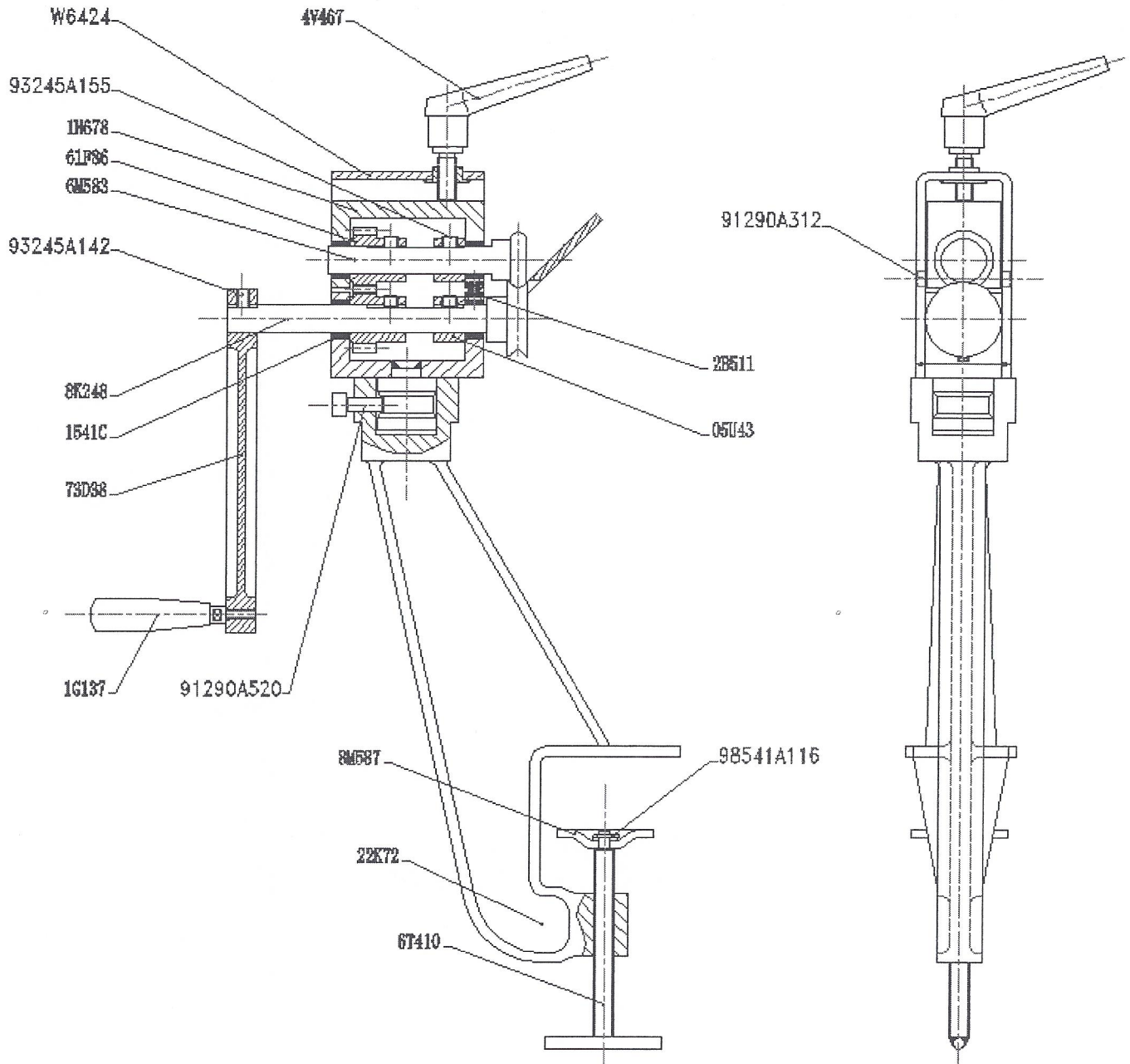
Maximum 1.2mm thickness (18 Gauge) mild steel and Galvanized steel.

### OPERATION

After setting the depth of forming rolls the operator will hold the material and feed it into the rolls while turning the handle. It is advised that the inexperienced operator test several small pieces before attempting to form production parts.

# Lockformer

711 Ogden Ave. Lisle, IL, 60532, USA  
tel# 1-630-964-8000, [WWW.LOCKFORMER.COM](http://WWW.LOCKFORMER.COM)



**FORMTEK**

ONE PIERCE PLACE, SUITE 400E  
ITASCA, IL 60143  
PHONE: 630-285-1600  
FAX: 630-285-1209

EASY EDGER MANUAL  
09-14-2005

# Lockformer

711 Ogden Ave. Lisle, IL, 60532, USA  
tel# 1-630-964-8000, [WWW.LOCKFORMER.COM](http://WWW.LOCKFORMER.COM)

EASY EDGER PARTS LIST			
ITEM	PART #	QTY	DESCRIPTION- ENGLISH
1	A9285	1	EASY EDGER
2	6T410	1	SCREW
3	22K72	1	BASE
4	8M587	1	WASHER
5	91290A520	1	SOCKET HEAD CAPSCREW M10X25
6	1G137	1	HANDEL
7	73D38	1	HANDEL POLE
8	1541C	4	SPACER
9	8K248	1	BOTTOM ROLL
10	93245A142	1	SOCKET SET SCREW M8 X 12
11	6M583	1	TOP ROLL
12	61F86	2	GEAR
13	1H678	1	TOP HOUSE
14	93245A155	4	SOCKET SET SCREW M10X10
15	W6424	1	HOUSE
16	4V467	1	HANDLE M12X32
17	91290A312	2	SOCKET HEAD CAPSCREW M6X8
18	2B511	1	SPRING
19	05U43	2	SPACER
20	98541A116	1	RETAINING RING 8