

# NO. 38 THROATLESS BENCH SHEAR

## INSTRUCTIONS & PARTS LIST

**CARE:** The No. 38 Throatless Bench Shear requires no special care. All bearings are lubricated before leaving the factory and should not require lubrication during the life of the Shear. A drop of light oil on the Shear Blade will ease the shearing operation on heavier metals.

**OPERATION:** Blades are easily removed for sharpening. The Upper Blade has three Blade Adjusting Screws which enables the operator to compensate for Upper Blade wear by adjusting the screws as necessary.

**NOTE:** When ordering parts, specify if roller bearing type or old style block type is required. Square block types will have, in place of Slide Bearing (16), a square block to actuate Slide (22).

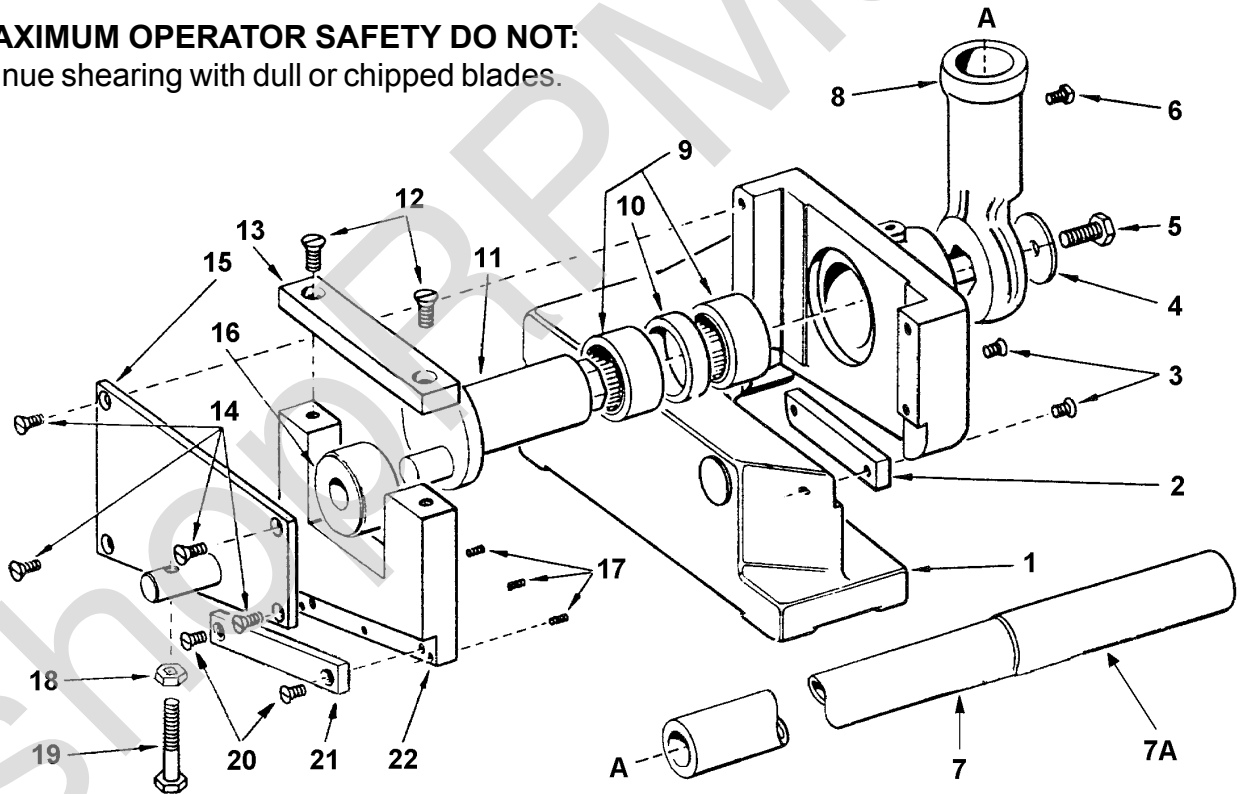


### FOR MAXIMUM OPERATOR SAFETY DO:

1. Read and understand this manual.
2. Be sure you shear 3/16" mild steel or 5/32" stainless steel or lighter.
3. Adjust blades to give best cut depending on thickness of material you are shearing.
4. Wear safety glasses.

### FOR MAXIMUM OPERATOR SAFETY DO NOT:

1. Continue shearing with dull or chipped blades.



**ROPER WHITNEY**

2833 HUFFMAN BLVD., ROCKFORD, ILLINOIS 61103-3990 \* 815/962-3011 \* FAX 815/962-2227

Website: [www.roperwhitney.com](http://www.roperwhitney.com) \* Email: [info@roperwhitney.com](mailto:info@roperwhitney.com)

**NO. 38 THROATLESS BENCH SHEAR  
PARTS LIST**

ITEM NO.	PART NO.	PART NAME	QTY.
1	740140028	Base	1
2	350003820	Lower Blade (Hi-Speed)	1
3	613012131	Lower Blade Screws 5/16-18 x 3/4 Flat Head	2
4	678033116	Operating Handle Washer	1
5	601012128	Operating Handle Bolt 5/16-18 x 1/2 Hex Head	1
6	633012126	Operating Handle Set Screw 5/16-18 x 3/8 Sq. Head	1
7	740030036	30" Operating Handle	1
7A	656356317	Vinyl Grip	1
8	740460037	Operating Handle	1
9	656235000	Crank Bearings (Torr BH2216)	2
10	740630032	Bearing Spacer	1
11	740210030	Crank	1
12	605012175	Block Retainer Screws 3/8-16 x 1 Flat Head	2
13	740260031	Block Retainer	1
14	613012086	Slide Cover Plate Screws 1/4-20 x 1/2 FHSC	4
15	740670033	Slide Cover Plate	1
16	240940005	Slide Roller Bearing	1
17	621012088	Blade Adjusting Screws 1/4-20 x 5/8 Socket Set	3
18	649023005	Hold Down Bolt Nut 3/8-16 Hex Jam	1
19	601012185	Hold Down Bolt 3/8-16 x 2 1/2 Hex Head	1
20	605012131	Upper Blade Screws 5/16-18 x 3/4 Flat Head	2
21	350003821	Upper Blade (Hi-Speed)	1
22	740730029	Slide	1