

NO. 39 BENCH SHEAR

INSTRUCTIONS AND PARTS LIST

SPECIFICATIONS

NO. 39	IN.	MM.
Capacity:		
Sheets & Flats		
Mild Steel	10 GA.	3.42
Stainless Steel	3/32	2.38
Rounds		
Mild Steel	7/16	11.11
Stainless Steel	----	----
Height	11 1/2	292
Length	10	254.1
Width	4 1/4	108
Length of Blades	4 1/16	103



CARE: The No. 39 Bench Shear requires no special care. All bearings are lubricated before leaving the factory and should not require lubrication during the life of the Shear. A drop of light oil on the Shear Blade will ease the shearing operation on heavier metals.

OPERATION: Blades can be removed for sharpening. The Lower Blade has three Blade Adjusting Screws which enables the operator to maintain proper blade clearance between upper and lower shear blades by adjusting the screws as necessary.

FOR MAXIMUM OPERATOR SAFETY DO:

1. Read and understand this manual.
2. Be sure you shear 3/16" mild steel or lighter.
3. Adjust blades to give best cut depending on thickness of material you are shearing.
4. Wear safety glasses.

FOR MAXIMUM OPERATOR SAFETY DO NOT:

1. Continue shearing with dull or chipped blades.



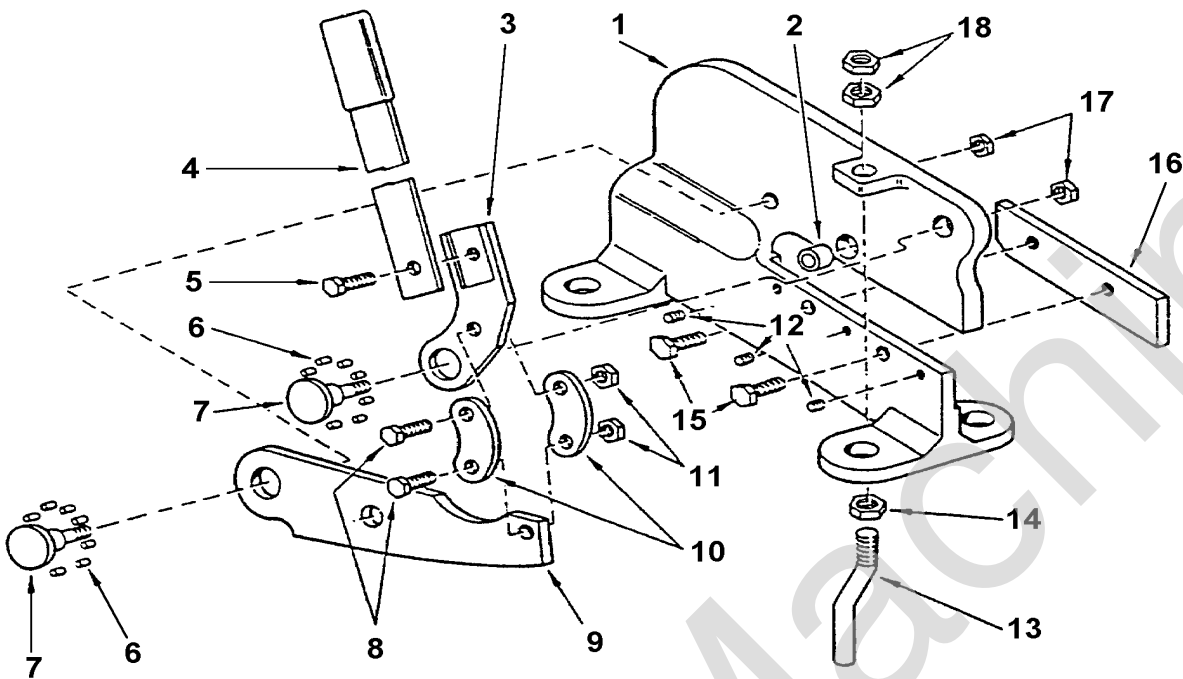
ROPER WHITNEY

2833 HUFFMAN BLVD., ROCKFORD, ILLINOIS 61103-3990 * 815/962-3011 * FAX 815/962-2227

Website: www.roperswhitney.com * Email: info@roperswhitney.com

NO. 39 BENCH SHEAR

INSTRUCTIONS AND PARTS LIST



ITEM NO.	PART NO.	PART NAME	QTY.
1	740140038	Frame	1
2	740850040	Rod Cutoff Die	1
3	740460044	Operating Handle	1
4	740030042	30" Operating Handle	1
5	601012221	Handle Bolt 7/16 -14 x 3/4 Hex Head	1
6	600255206	Roller Bearings (22 per set)	1 set
7	740160043	Pivot Bolts	2
8	603012177	Side Link Bolts	2
9	350003921	Upper Blade (Hi-Speed)	1
10	740240039	Side Links	2
11	643023005	Side Link Bolt Nuts 3/8-16 Hex Full	2
12	600325906	Lower Blade Adjusting Screws 1/4-20 x 5/16 Headless	3
13	740160041	Hold Down Stud	1
14	643023007	Hold Down Stud Nut 1/2-13 Hex Full	1
15	601012172	Lower Blade Screws 3/8-16 x 1/2 Hex Head	2
16	350003920	Lower Blade (Hi-Speed)	1
17	649023007	Pivot Bolt Nuts 1/2-13 Hex Jam	2
18	649023007	Hold Down Stud Nuts 1/2-13 Hex Jam	2

When ordering, list Item No., Part No., and Part Name.